



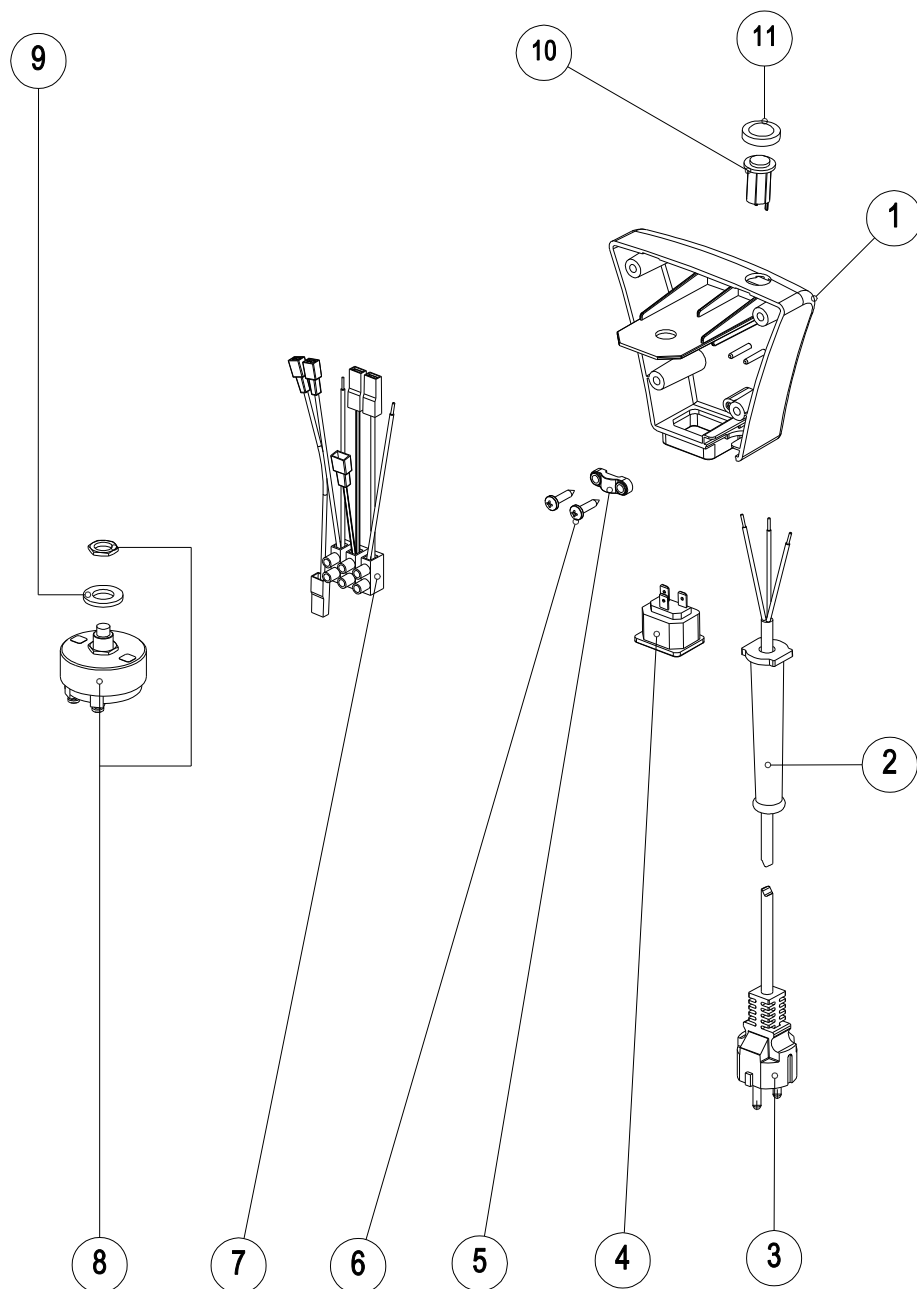
# Catalogo Ricambi Spare Parts Catalogue Manuel des Pieces



## PM 150

Rel. 2019060719



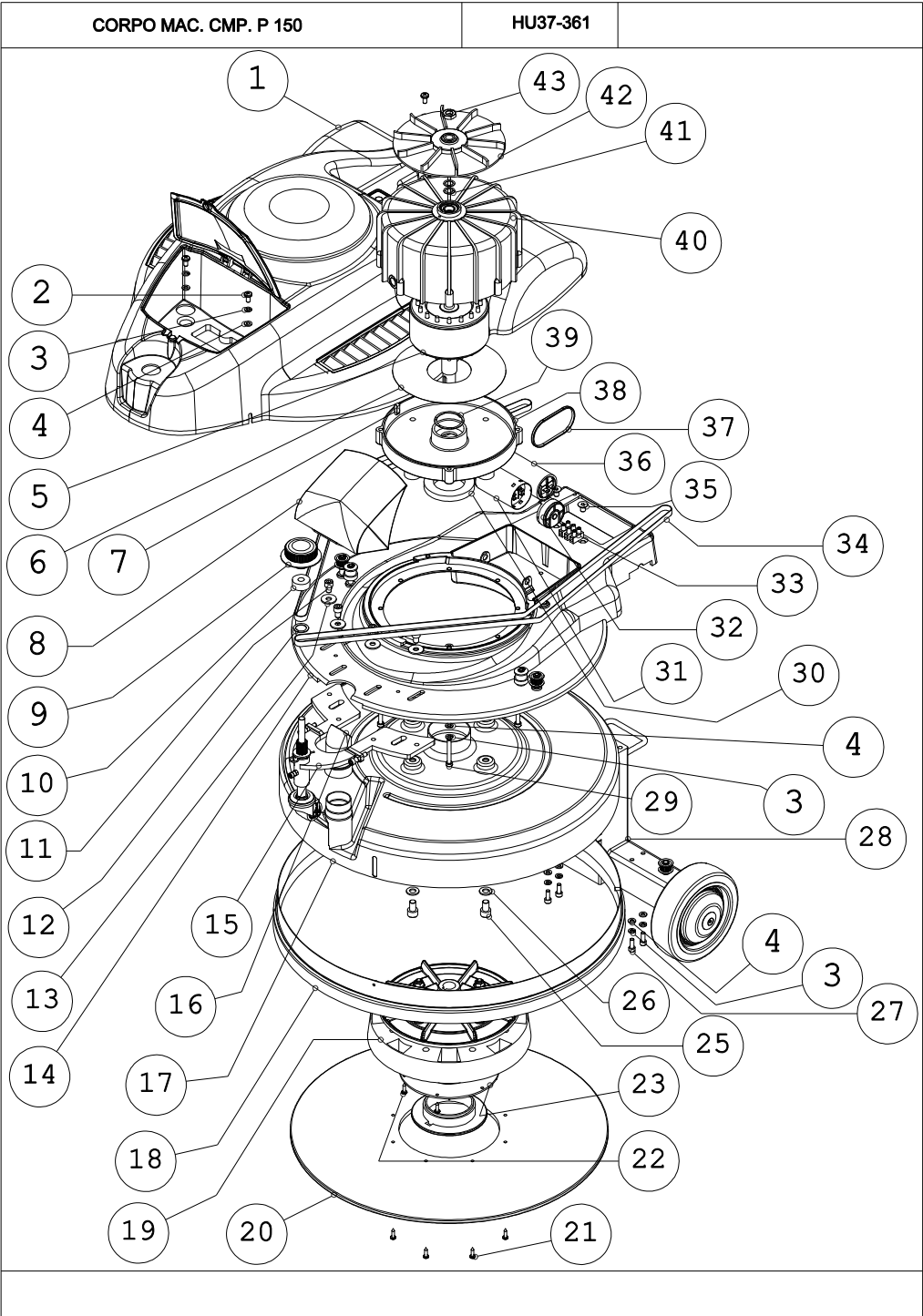
37230P-02

37230P-02

[illegible]

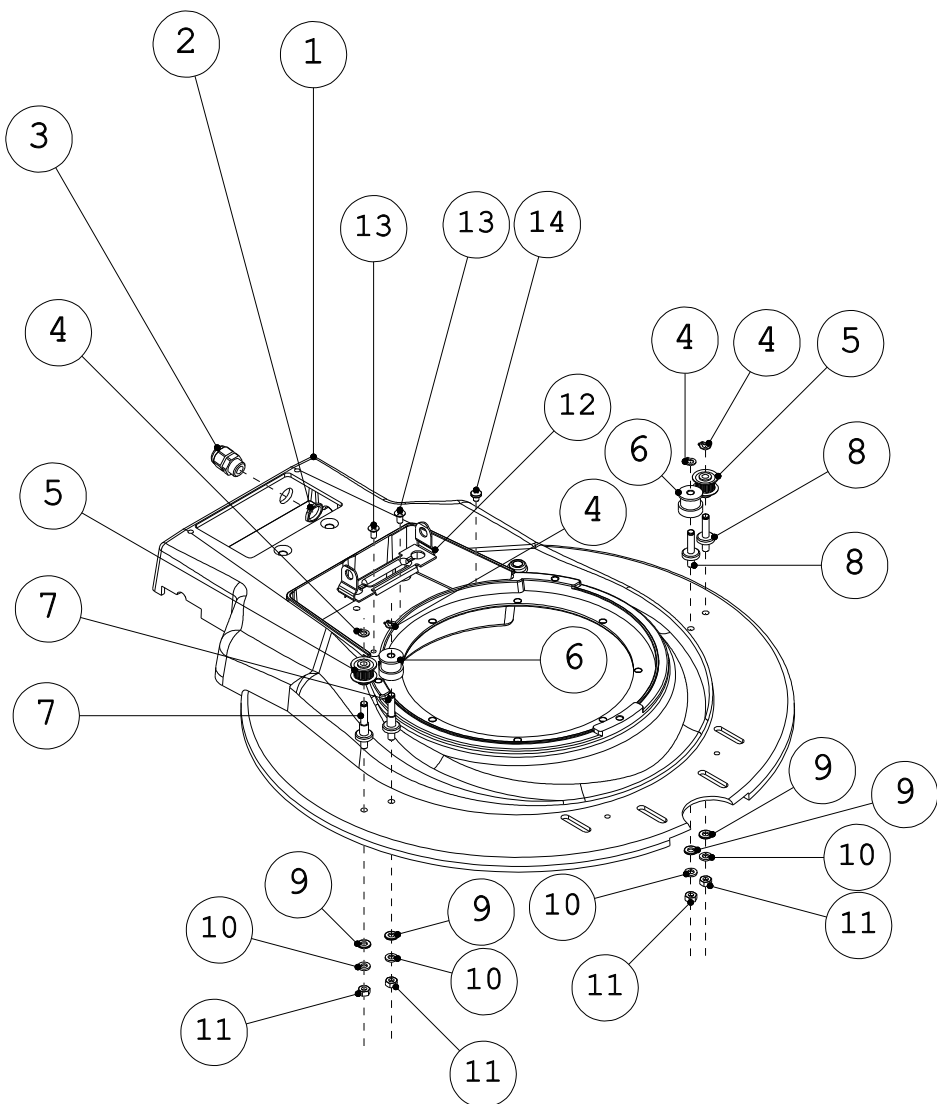






CORPO MAC. CMP. P 150			HU37-361	
POS.	DESCRIZIONE	Q.tà	COD.	NOTE
1	CARROZZERIA CMP. P 150	1	HU17-385	
2	VITE TC M6 X 12	4	2508275	
3	RONDELLA GROWER D6	12	23.0004.00	
4	RONDELLA PIANA D6	12	23.0046.00	
5	ROTORE BIL. H55 C 150 U13 + CUSCINETTO	1	10-712	
6	RANELLA ISOLANTE	1	11-030	
7	CHIAVETTA ALBERO ROTORE	1	14-421	
8	FILTRO CARTA	1	2512052	
9	VOLANTINO + GRANO	1	15108P	
10	DISTANZIALE	1	14-285	
11	VITE TCEI M8 X 12	4	13-016	
12	ANELLO RAS. 17.5 X 23.8 X 0.5	1	13-013	
13	RONDELLA PIANA 8 X 24	4	23.0028.00	
14	GR.FUSIONE	1	301198	
15	GR. TENDICINGHIA C 150 U13	1	17-370	
16	CONVOGLIATORE DI FLUSSO	1	2004937	
17	CORONA ASPIRANTE	1	15-150	
18	CORONA SETOLATA	1	01-716	
19	GR. TRASCINATORE C 150 U13	1	17-376	
20	TRASCINATORE CROWU D. 505	1	01-698	
21	VITE 4.5 X 20 TC FISSAGGIO TRASC. CROWU	8	13-922	
22	VITE 4.5 X 20 TC FISS. ANELLO DI SERRAGGIO	4	13-922	
23	KIT RICAMBIO GR.ANELLO DI SERRAGGIO	1	15104F	
25	VITE TCEI M10 X 16	4	13-017	
26	RONDELLA 10.5 X 21	4	2509061	
27	VITE TCEI M6 X 16	4	2508010	
28	GR. ASSALE POST. C 150 U13	1	17-380	
29	VITE TCEI M6 X 45	4	KA13-982	
30	ANELLO MOUSSE ADESIVA	1	16-327	
31	CONDENSATORE SPUNTO	1	12-124	
32	COPERCHIETTO CONDENSATORE	1	12121A	
33	MORSETTO CABLATO	1	10-969	
34	CINGHIA 600 XL 037	2	16-440	
35	VITE TSPCEI M8 X 12	2	13-020	
36	CONDENSATORE INSERITO	1	12123A	
37	FASCETTA NYLON 4.8 X 390	1	2502051	
38	COPERCHIO STATORE	1	11555B	
39	ANELLO DI COMPENSAZIONE	1	13-003	
40	GR. SATATORE	1	10-610	
41	ANELLO RASAM.12 X 18 X 0.5	2	13-008	
42	VENTOLA	1	14-121	
43	DADO M12 X 1	1	13-939	



[illegible]









CARROZZERIA CMP. P 150	HU17-385
------------------------	----------

This technical diagram illustrates the assembly of a car body component, likely a rear hatch or trunk lid. The diagram shows the main body panel (1) and its internal structural reinforcements (2, 3, 4). A circular hatch or access panel (5) is shown being attached to the main body. The assembly is supported by a complex frame (6, 7, 8, 9, 10, 11, 12) which includes various mounting points and structural members. A circular hatch or access panel (13) is shown being attached to the main body. The diagram uses dashed lines to indicate the assembly sequence and the relative positions of the components.

[illegible]

**hollu Systemhygiene GmbH**

Salzstraße 6 6170 Zirl

**Tel.:** 00800 52800 900 **Fax:** 0043 5238 / 52800-990 **E-Mail:** [info@hollu.com](mailto:info@hollu.com)